

## QuickLock Thread Adapters for P-726 PIFOC Scanners

### P-726.xx Thread Adapters

## Contents

<b>About this Document</b>	<b>2</b>
Typographic Conventions .....	2
Symbols Used .....	2
Other Applicable Documents .....	2
Downloading Manuals .....	2
<b>Product Description</b>	<b>3</b>
<b>Installation</b>	<b>3</b>
P-726.xx QuickLock Thread Adapter Set for P-726.....	3
Component Overview .....	4
Mounting the P-726.xx QuickLock Thread Adapter Set .....	4
<b>Demounting</b>	<b>6</b>
<b>Customer Service Department</b>	<b>7</b>

# Installation Instructions

P726T0001, valid for P-726.xx

ECo/CBo, 2/20/2020



## About this Document

This document describes mounting and demounting the P-726.xx QuickLock thread adapters for the P-726 PIFOC positioners.

The letter "x" in the product number stands for various models.

## Typographic Conventions

Symbol/ Label	Meaning
1. 2.	Action consisting of several steps with strict sequential order
➤	Action consisting of one or more steps without relevant sequential order
▪	Lists
p. 5	Cross-reference to page 5

## Symbols Used

### NOTICE



#### Dangerous situation

If not avoided, the dangerous situation will result in damage to equipment.

- Measures for avoiding the risk.

## Other Applicable Documents

Product	Document
P-726 PIFOC high-load objective scanner	P726T0002 user manual
P-5xx / P-6xx / P-7xx piezo positioning systems	PZ240 short instructions

## Downloading Manuals

### INFORMATION

If a manual is missing or problems occur with downloading:

- Contact our customer service department (p. 7).

## Downloading manuals

1. Open the website **www.pi.ws**.
2. Search the website for the product number (e.g., P-726) or the product family (e.g., PIFOC).
3. Click the corresponding product to open the product detail page.
4. Click **Downloads**.

The manuals are shown under **Documentation**.

5. Click the desired manual and fill out the inquiry form.

The download link will then be sent to the email address entered.

## Product Description

The QuickLock thread adapters described in this document are used for inserting P-726 PIFOC positioners between the microscope and objective.

The QuickLock thread adapters provide interchangeable insert rings with matching threads for the microscope and the objective. The objective ring accepts the microscope objective and is screwed into the PIFOC body (the required key tool is provided). The turret ring is screwed into the microscope and is clamped to the PIFOC body under the knurled ring.

The QuickLock thread adapters were developed to allow use of the same PIFOC positioner with any of the supported microscope and objective thread types.

All thread adapters can be installed without the need to turn the PIFOC positioner. This avoids tangling the cables.

Note that the respective PIFOC positioners and QuickLock thread adapters must be ordered separately.

## Installation

### P-726.xx QuickLock Thread Adapter Set for P-726

The P-726.xx QuickLock thread adapters are available with apertures that have various different inner diameters:

QuickLock thread adapter set	Thread size	Aperture diameter
P-726.04	M28 x 0.75 mm	23 mm
P-726.05	M32 x 0.75 mm	27 mm
P-726.06	M26 x 1/36"	21 mm
P-726.11	M25 x 0.75 mm	21 mm
P-726.12	W0.8 x 1/36"	16 mm

# Installation Instructions

P726T0001, valid for P-726.xx

ECo/CBo, 2/20/2020

## Component Overview



Fig. 1: PIFOC exploded view, as mounted on non-inverted microscope

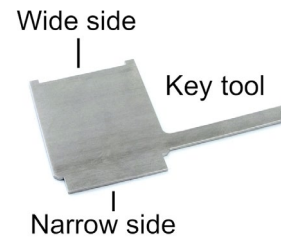


Fig. 2: Included key tool

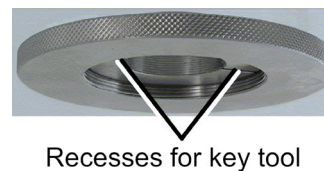


Fig. 3: Recesses in the turret ring

## Mounting the P-726.xx QuickLock Thread Adapter Set

### NOTICE



#### Possible damage due to excessive torque!

Only moderate torque is required to fix the objective ring in the PIFOC body.

- Use the key tool supplied for tightening the objective ring.

### Requirements

- ✓ The PIFOC positioner is **not** connected to the electronics.

### Tools and accessories

- P-726.xx QuickLock thread adapter set
- Key tool supplied (refer to Fig. 2, p. 4)

## Mounting the P-726.xx QuickLock thread adapter set

1. Screw the objective ring into the PIFOC using the key tool supplied. Use the wide side of the key tool to engage the recesses in the ring. Grip the tool by hand only.

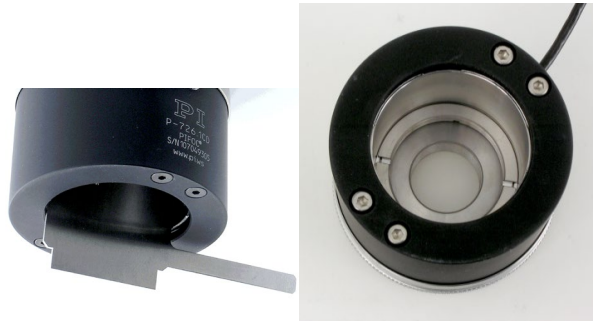


Fig. 4: Objective ring with recesses inside PIFOC can be tightened with key tool

2. Insert the turret ring into the knurled ring.

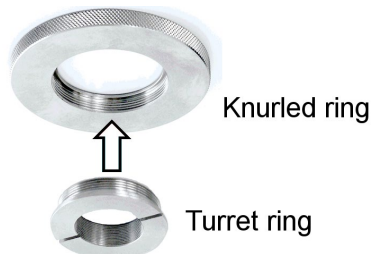


Fig. 5: Insertion of turret ring into knurled ring

3. Screw the turret ring together with the knurled ring clockwise into the microscope (not shown). Use the narrow side of the key tool to engage the recesses in the ring. Grip the tool by hand only.
4. Affix the PIFOC to the microscope: Align the PIFOC with the knurled ring and screw the knurled ring onto the PIFOC.

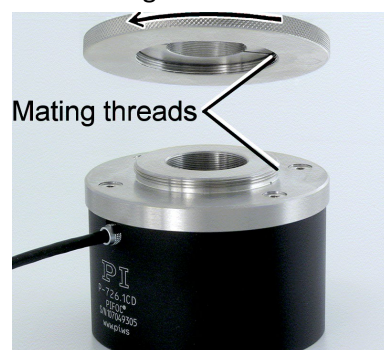


Fig. 6: Screwing the knurled ring onto the PIFOC

5. Screw the objective into the objective ring of your PIFOC.



Fig. 7: Objective installed in PIFOC

## Demounting

1. Remove the PIFOC from the microscope (not shown): Hold the PIFOC by the base body with one hand and unscrew the knurled ring from the PIFOC with the other hand as shown in the figure below.

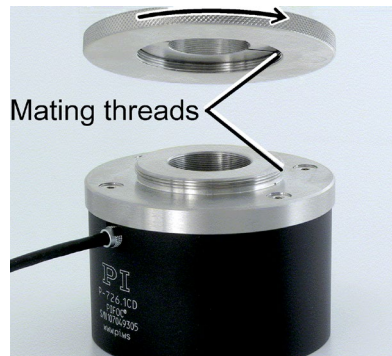


Fig. 8: Unscrewing the knurled ring

2. If the turret ring needs to be removed from the microscope, use the narrow side of the key tool to unscrew the ring from the microscope (not shown). Grip the tool by hand only.
3. If the objective needs to be removed, unscrew it from the PIFOC body. The objective ring will probably remain in the PIFOC.



Fig. 9: Objective installed in PIFOC

4. If the objective ring is still in the PIFOC and needs to be removed, use the wide side of the key tool supplied to unscrew the ring from the PIFOC. Grip the tool by hand only.



Fig. 10: Objective ring with recesses inside PIFOC can be loosened with key tool

---

## Customer Service Department

For inquiries and orders, contact your PI sales representative or send us an email ([service@pi.de](mailto:service@pi.de)).

- If you have questions concerning your system, provide the following information:
  - Product and serial numbers of all products in the system
  - Firmware version of the controller (if applicable)
  - Version of the driver or the software (if applicable)
  - PC operating system (if applicable)
- If possible: Take photographs or make videos of your system that can be sent to our customer service department if requested.

The current versions of the user manuals can be downloaded at [www.pi.ws](http://www.pi.ws).